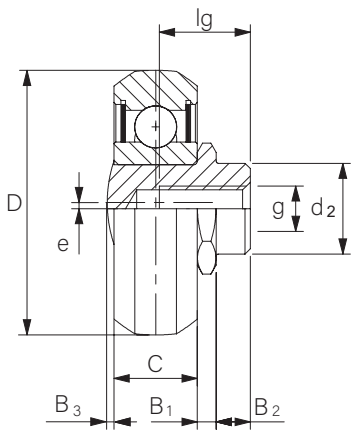
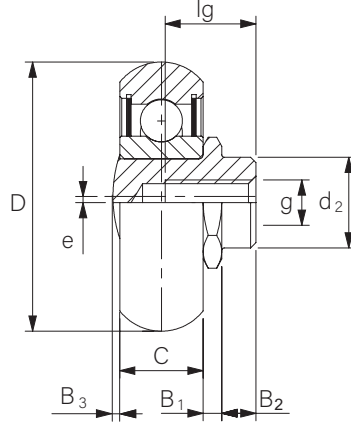


Ball Bearing Track rollers For Compact Rail

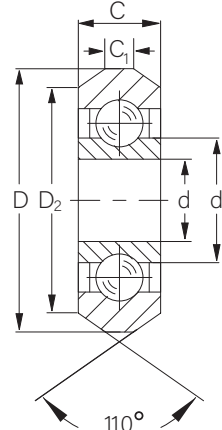
Ball Bearing Tracker Roller for T,U,K Rail



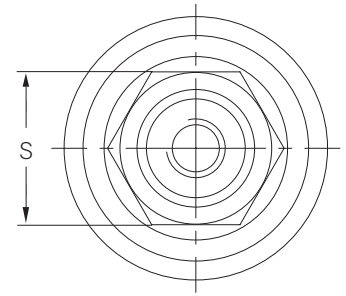
Prismatic (T- and U-rail)



Crowned (K-rail)



Roller Only



| Roller No | Roller No | Bearing No | D | C | d2 | e | B1 | B2 | lg | d | D2 | C1 | B3 | g | C | C0r | Weight |
|--------------|--------------|------------|------|----|----|-----|------|-----|------|----|------|-----|-----|-----|-------|------|--------|
| concentric | eccentric | | mm | | | | | | | | | | max | | N | | kg |
| CPN18-2Z | CPA18-2Z | C18-2Z | 14 | 4 | 6 | 0.4 | 1.55 | 1.8 | 5.5 | 5 | 12.4 | 1.6 | 0.5 | M4 | 765 | 410 | 0.004 |
| CPN18-2RS | CPA18-2RS | C18-2RS | 14 | 4 | 6 | 0.4 | 1.55 | 1.8 | 5.5 | 5 | 12.4 | 1.6 | 0.5 | M4 | 765 | 410 | 0.004 |
| CPN28-2Z | CPA28-2Z | C28-2Z | 23.2 | 7 | 10 | 0.6 | 2.20 | 3.8 | 7.0 | 7 | 19.2 | 2.4 | 0.6 | M5 | 2130 | 1085 | 0.019 |
| CPN28-2RS | CPA28-2RS | C28-2RS | 23.2 | 7 | 10 | 0.6 | 2.20 | 3.8 | 7.0 | 7 | 19.2 | 2.4 | 0.6 | M5 | 2130 | 1085 | 0.019 |
| CPN35-2Z | CPA35-2Z | C35-2Z | 28.2 | 8 | 12 | 0.7 | 2.55 | 4.2 | 9.0 | 8 | 25.1 | 3.3 | 0.7 | M5 | 4020 | 1755 | 0.032 |
| CPN35-2RS | CPA35-2RS | C35-2RS | 28.2 | 8 | 12 | 0.7 | 2.55 | 4.2 | 9.0 | 8 | 25.1 | 3.3 | 0.7 | M5 | 4020 | 1755 | 0.032 |
| CPN43-2Z | CPA43-2Z | C43-2Z | 35 | 11 | 12 | 0.8 | 2.50 | 4.5 | 12.0 | 10 | 30.8 | 5.0 | 0.7 | M6 | 6140 | 2750 | 0.060 |
| CPN43-2RS | CPA43-2RS | C43-2RS | 35 | 11 | 12 | 0.8 | 2.50 | 4.5 | 12.0 | 10 | 30.8 | 5.0 | 0.7 | M6 | 6140 | 2750 | 0.060 |
| CPN63-2ZR | CPA63-2ZR | C63-2ZR | 50 | 18 | 18 | 1.2 | 2.30 | 6.0 | 16.0 | 15 | - | - | 0.7 | M10 | 15375 | 6250 | 0.190 |
| | | | | | | | | | | | | | | | | | |
| CRPN43-2Z | CRPA43-2Z | CR43-2Z | 35.6 | 11 | 12 | 0.8 | 2.50 | 4.5 | 12.0 | 10 | - | - | - | - | 6140 | 2550 | 0.060 |
| CRPN63-2ZR | CRPA63-2ZR | CR63-2ZR | 49.7 | 18 | 18 | 1.2 | 2.30 | 6.0 | 16.0 | 15 | - | - | - | - | 15375 | 5775 | 0.190 |
| | | | | | | | | | | | | | | | | | |
| CXPNX18-2RS | CXPAX18-2RS | CX18-2RS | 14 | 4 | 6 | 0.4 | 1.55 | 1.8 | 5.5 | 5 | 12.4 | 1.6 | 0.5 | M4 | 765 | 410 | 0.004 |
| CXPNX28-2RS | CXPAX28-2RS | CX28-2RS | 23.2 | 7 | 10 | 0.6 | 2.20 | 3.8 | 7.0 | 7 | 19.2 | 2.4 | 0.6 | M5 | 2130 | 1085 | 0.019 |
| CXPNX35-2RS | CXPAX35-2RS | CX35-2RS | 28.2 | 8 | 12 | 0.7 | 2.55 | 4.2 | 9.0 | 8 | 25.1 | 3.3 | 0.7 | M5 | 4020 | 1755 | 0.032 |
| CXPNX43-2RS | CXPAX43-2RS | CX43-2RS | 35 | 11 | 12 | 0.8 | 2.50 | 4.5 | 12.0 | 10 | 30.8 | 5.0 | 0.7 | M6 | 6140 | 2750 | 0.060 |
| CXPNX63-2RS | CXPAX63-2RS | CX63-2RS | 50 | 18 | 18 | 1.2 | 2.30 | 6.0 | 16.0 | 15 | - | - | 0.7 | M10 | 15375 | 6250 | 0.190 |
| | | | | | | | | | | | | | | | | | |
| CRXPNX43-2RS | CRXPAX43-2RS | CRX43-2RS | 35.6 | 11 | 12 | 0.8 | 2.50 | 4.5 | 12.0 | 10 | - | - | 0.7 | M6 | 6140 | 2550 | 0.060 |
| CRXPNX63-2RS | CRXPAX63-2RS | CRX63-2RS | 49.7 | 18 | 18 | 1.2 | 2.30 | 6.0 | 16.0 | 15 | - | - | 0.7 | M10 | 15375 | 5775 | 0.190 |

Explanation of Prefix and Suffix:

| | | | |
|-----|---|-----|--|
| C | with prismatic profile on outer surface | CR | with crowned profile on outer surface |
| CPN | with concentric stud and prismatic profile on outer surface | CPA | with eccentric stud and prismatic profile on outer surface |
| CRN | with concentric stud and crowned profile on outer surface | CRA | with eccentric stud and crowned profile on outer surface |
| 2Z | with double metal shields | 2RS | with double NBR (Nitrile Butadiene Rubber) seal |
| X | Stainless steel 440C | | |

Tolerance and Run Out Accuracy:

Bore diameter (d): +0/-0.008mm; Outer diameter (D) : +0/-0.04; Width(B) +0/-0.03; Run out: ≤ 0.02mm

Standard Grease Pre-filled:

Kyodo Yushi SRL or SINOPEC 7014

Material:

Rings SKF3 grade 100Cr6 (52100)

Steel Balls G5 grade Z3V3 noise level, SKF3 grade 100Cr6 (52100)

Linear rails with high precision ball bearing roller slider

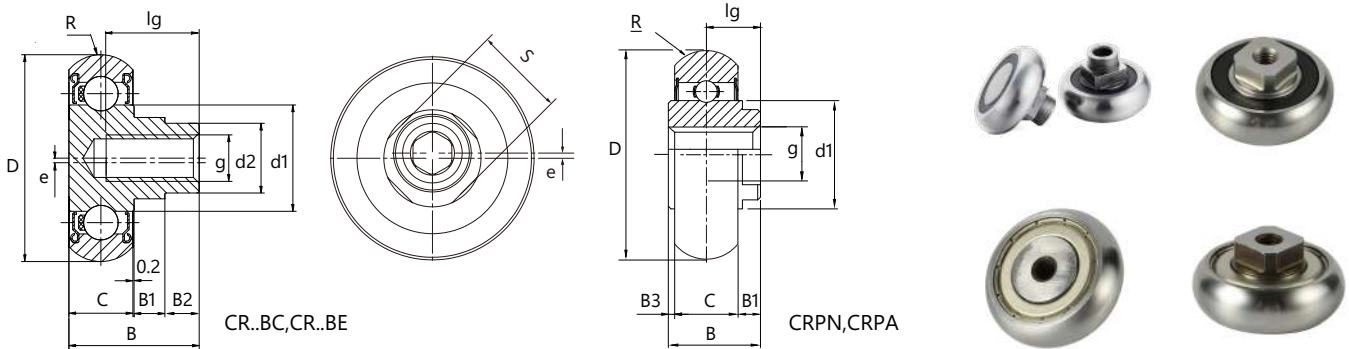


Description

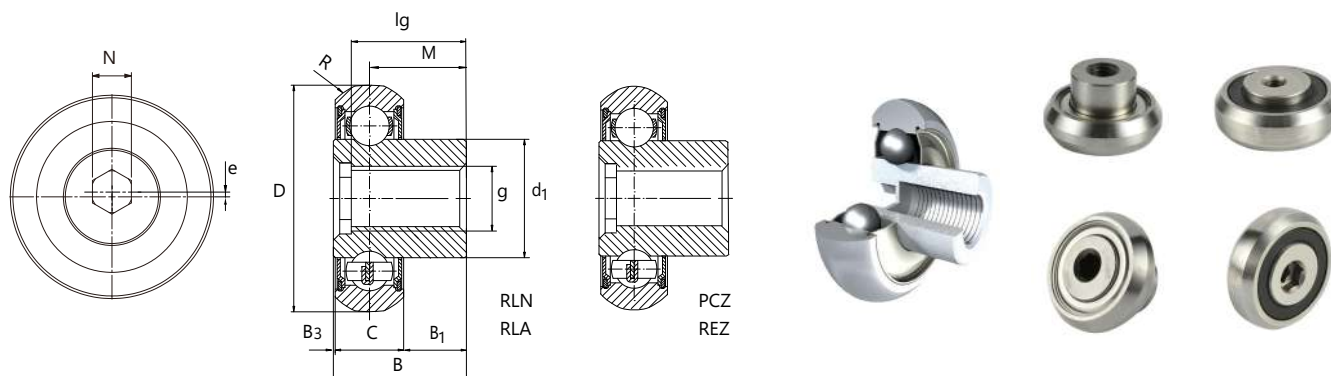
Compact Rail is a linear system consisting of steel linear rails with induction hardened raceways and high precision radial ball bearing sliders, also made of hardened steel. Thanks to their self-aligning capabilities, Compact Rail linear guides simplify the project, improve the performance and reduce the overall cost of application. Compact Rail linear guides are easy to install on all types of surfaces, including non-machined ones. Compact Rail linear guides feature a robust steel slider with ball bearings, self-centering heads with wipers, longitudinal seals to protect the internal components and a top sealing strip. The slider body is accurately finished with matte longitudinal edge chamfer and a shining ground flat surface. The slider heads are equipped with special slow release felt pads and are free to rotate with respect to the slider body, so that the felts are always in contact with the raceways to ensure optimal lubrication.

Product information

| | |
|--|--|
| Available sizes for T-rail, U-rail | 18, 28, 35, 43, 63 |
| Available sizes for K-rail | 43, 63 |
| Max. operating speed | 9 m/s (354 in/s) (depending on application) |
| Max. acceleration | 20 m/s ² (787 in/s ²) (depending on application) |
| Max. radial load capacity | 15,000 N (per slider) |
| Temperature Range | 20 °C to +120 °C (-4 °F to +248 °F) briefly up to max. +170 °C (+338 °F) |
| Available rail lengths from | 160 mm to 3,600 mm (6.3 in to 142 in) in 80-mm increments (3.15 in) |
| Roller pins lubricated for life | Roller pins lubricated for life |
| Roller seal/shield | 2RS (splash-proof), 2Z (steel cover disk) |
| Roller material | steel GCr15 (100Cr6 , 52100) |
| Rail raceways induction hardened and ground | Rail raceways induction hardened and ground |
| Rails and slider bodies are standard zinc-plated according to ISO 2081 | Rails and slider bodies are standard zinc-plated according to ISO 2081 |
| Rail material of T- and U-rails in sizes 18 | cold-drawn roller bearing carbon steel C43 F |
| Rail material of K-rails, as well as T- and U-rails in size 28 to 63 | CF53 |



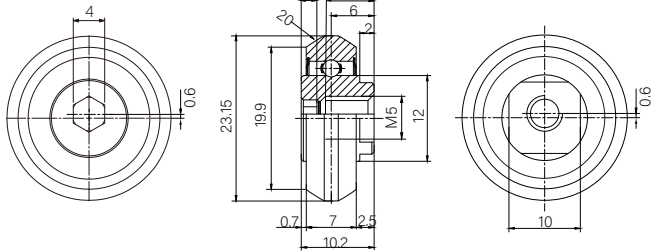
| Part Number | e | D | C | B | B ₁ | B ₂ | B ₃ | d ₁ | d ₂ | g | lg | S | C | C _{0 rad} | C _{0 ax} | R | Weight |
|----------------|-----|-------------|-------------|-------------|----------------|----------------|----------------|----------------|----------------|-------------|----|----|----------------|--------------------|-------------------|------|--------|
| | mm | | | | | | | | | | | | N | | | g | |
| | | +0 -0.05 | +0 -0.04 | +0 -0.02 | +0 -0.2 | +0 -0.2 | | | ±0.1 | +0 -0.05 | | | +0.05 -0.15 | | | | |
| CH.CR20BC | - | 14 | 4 | 8.9 | 2.9 | 2 | | 7.35 | 5 | M3 | 7 | 6 | 280 | 210 | 160 | 2.8 | 4 |
| CH.CR20BE | 0.5 | 14 | 4 | 8.9 | 2.9 | 2 | | 7.35 | 5 | M3 | 7 | 6 | 280 | 210 | 160 | 2.8 | 4 |
| CH.CR30BC | - | 22.8 | 7 | 14 | 3 | 4 | | 12 | 9 | M5 | 9 | 10 | 800 | 610 | 420 | 5 | 18 |
| CH.CR30BE | 0.6 | 22.8 | 7 | 14 | 3 | 4 | | 12 | 9 | M5 | 9 | 10 | 800 | 610 | 420 | 5 | 18 |
| CH.CR45BC | - | 35.5 | 11 | 22.5 | 5.5 | 6 | | 18.3 | 12 | M8 | 16 | 14 | 5100 | 2500 | 625 | 7 | 68 |
| CH.CR45BE | 0.6 | 35.5 | 11 | 22.5 | 5.5 | 6 | | 18.3 | 12 | M8 | 16 | 14 | 5100 | 5100 | 625 | 7 | 68 |
| CH.CRPN20-2Z | - | 14 | 4 | 8.2 | 4 | | 0.2 | 7.35 | 8 | M4 | 6 | 6 | 765 | 163 | 160 | 2.8 | 6 |
| CH.CRPA20-2Z | 0.5 | 14 | 4 | 8.2 | 4 | | 0.2 | 7.35 | 8 | M4 | 6 | 6 | 765 | 163 | 160 | 2.8 | 6 |
| CH.CRPN30-2Z | - | 22.8 | 7 | 12 | 4.5 | | 0.5 | 12 | 12 | M5 | 7 | 10 | 2130 | 435 | 420 | 4.76 | 20 |
| CH.CRPA30-2Z | 0.6 | 22.8 | 7 | 12 | 4.5 | | 0.5 | 12 | 12 | M5 | 7 | 10 | 2130 | 435 | 420 | 4.76 | 20 |
| CH.CRPN45-2Z | - | 35.6 | 11 | 17.3 | 6 | | 0.3 | 18.3 | 16 | M6 | 12 | 13 | 6140 | 870 | 625 | 7 | 68 |
| CH.CRPA45-2Z | 0.8 | 35.6 | 11 | 17.3 | 6 | | 0.3 | 18.3 | 16 | M6 | 12 | 13 | 6140 | 870 | 625 | 7 | 68 |
| CH.CRPNX20-2RS | - | 14 | 4 | 8.2 | 4 | | 0.2 | 7.35 | 8 | M4 | 6 | 6 | 765 | 150 | 160 | 2.8 | 6 |
| CH.CRPAX20-2RS | 0.5 | 14 | 4 | 8.2 | 4 | | 0.2 | 7.35 | 8 | M4 | 6 | 6 | 765 | 150 | 160 | 2.8 | 6 |
| CH.CRPNX30-2RS | - | 22.8 | 7 | 12 | 4.5 | | 0.5 | 12 | 12 | M5 | 7 | 10 | 2130 | 400 | 420 | 4.76 | 20 |
| CH.CRPAX30-2RS | 0.6 | 22.8 | 7 | 12 | 4.5 | | 0.5 | 12 | 12 | M5 | 7 | 10 | 2130 | 400 | 420 | 4.76 | 20 |
| CH.CRPNX45-2RS | - | 35.6 | 11 | 17.3 | 6 | | 0.3 | 18.3 | 16 | M6 | 12 | 13 | 6140 | 800 | 625 | 7 | 68 |
| CH.CRPAX45-2RS | 0.8 | 35.6 | 11 | 17.3 | 6 | | 0.3 | 18.3 | 16 | M6 | 12 | 13 | 6140 | 800 | 625 | 7 | 68 |



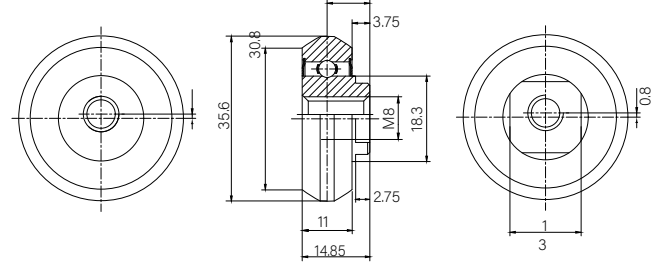
| Part Number | e | D | C | M | B | B ₁ | B ₃ | d ₁ | g | lg | N | C | C _{0 rad} | C _{0 ax} | R | Weight |
|-------------|-----|----------|----------|-------|-------|----------------|----------------|----------------|------|-----|---|----------|--------------------|-------------------|-----|--------|
| | mm | | | | | | | | | | | N | | | | g |
| | | +0/-0.05 | +0/-0.04 | ±0.03 | -0.02 | +0/-0.2 | | | ±0.1 | | | +0.15/-0 | | | | |
| CH.RLN26 | - | 20.2 | 6 | 8.5 | 11.8 | 5.5 | 0.3 | 11.2 | M5 | 8.2 | 4 | 900 | 400 | 126 | 20 | 13 |
| CH.RLA26 | 0.6 | 20.2 | 6 | 8.5 | 11.8 | 5.5 | 0.3 | 11.2 | M5 | 8.2 | 4 | 900 | 400 | 126 | 20 | 13 |
| CH.RLN40 | - | 31.5 | 10 | 9.65 | 14.95 | 4.65 | 0.3 | 15 | M6 | 10 | 5 | 1360 | 800 | 296 | 25 | 48 |
| CH.RLA40 | 0.7 | 31.5 | 10 | 9.65 | 14.95 | 4.65 | 0.3 | 15 | M6 | 10 | 5 | 1360 | 800 | 296 | 25 | 48 |
| CH.RLNx26 | - | 20.3 | 6 | 8.5 | 11.8 | 5.5 | 0.3 | 11.2 | M5 | 8.2 | 4 | 900 | 400 | 126 | 20 | 13 |
| CH.RLAX26 | 0.6 | 20.3 | 6 | 8.5 | 11.8 | 5.5 | 0.3 | 11.2 | M5 | 8.2 | 4 | 900 | 400 | 126 | 20 | 13 |
| CH.RLNx40 | - | 31.5 | 10 | 9.65 | 14.95 | 4.65 | 0.3 | 15 | M6 | 10 | 5 | 1360 | 800 | 296 | 25 | 48 |
| CH.RLAX40 | 0.7 | 31.5 | 10 | 9.65 | 14.95 | 4.65 | 0.3 | 15 | M6 | 10 | 5 | 1360 | 800 | 296 | 25 | 48 |
| | | | | | | | | | | | | | | | | |
| CH.PCZ26 | - | 20.3 | 6 | 8.5 | 11.8 | 5.5 | 0.3 | 11.2 | M5 | 8.2 | 4 | 900 | 400 | 148 | 2.8 | 13 |
| CH.PEZ26 | 0.6 | 20.3 | 6 | 8.5 | 11.8 | 5.5 | 0.3 | 11.2 | M5 | 8.2 | 4 | 900 | 400 | 148 | 2.8 | 13 |
| CH.PCZ40 | - | 32 | 10 | 9.65 | 14.95 | 4.65 | 0.3 | 15 | M6 | 10 | 5 | 1360 | 800 | 296 | - | 48 |
| CH.PEZ40 | 0.8 | 32 | 10 | 9.65 | 14.95 | 4.65 | 0.3 | 15 | M6 | 10 | 5 | 1360 | 800 | 296 | - | 48 |
| CH.PCX26 | - | 20.3 | 6 | 8.5 | 11.8 | 5.5 | 0.3 | 11.2 | M5 | 8.2 | 4 | 900 | 400 | 148 | 2.8 | 13 |
| CH.PEX26 | 0.6 | 20.3 | 6 | 8.5 | 11.8 | 5.5 | 0.3 | 11.2 | M5 | 8.2 | 4 | 900 | 400 | 148 | 2.8 | 13 |
| CH.PCX40 | - | 32 | 10 | 9.65 | 14.95 | 4.65 | 0.3 | 15 | M6 | 10 | 5 | 1360 | 800 | 296 | - | 48 |
| CH.PEX40 | 0.8 | 32 | 10 | 9.65 | 14.95 | 4.65 | 0.3 | 15 | M6 | 10 | 5 | 1360 | 800 | 296 | - | 48 |



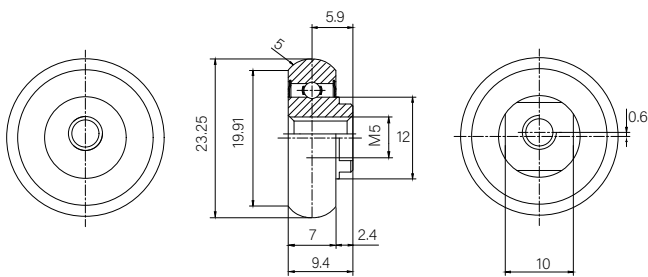
LCN28/LEN28



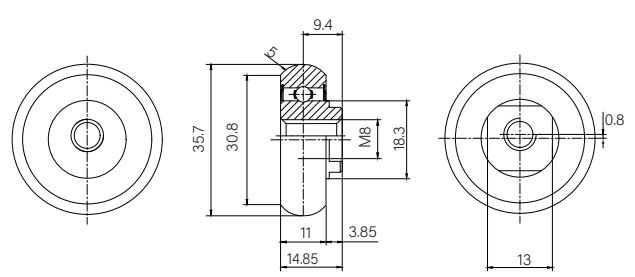
LCN43/LEN43



LCV28/LEV28



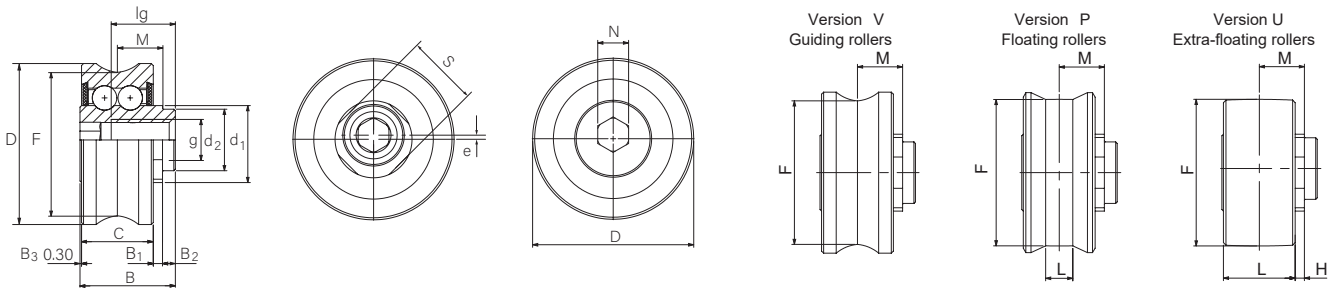
LCV43/LEV43



| Part Number | e | D | C | M | B | B ₁ | d ₁ | g | lg | S | C | C _{0 rad} | C _{0 ax} | R | Weight |
|-------------|-----|----------|----------|-------|-------|----------------|----------------|----|-------|-------------|------|--------------------|-------------------|----|--------|
| | mm | | | | | | | | | | N | | | g | |
| | | +0/-0.05 | +0/-0.04 | ±0.03 | -0.02 | +0/-0.2 | ±0.1 | | | +0.05/-0.15 | | | | | |
| CH.LCN28 | - | 23.15 | 7 | 6 | 10.2 | 2.5 | 12 | M5 | 6.5 | 10 | 680 | 600 | 250 | 20 | 20 |
| CH.LEN28 | 0.6 | 23.15 | 7 | 6 | 10.2 | 2.5 | 12 | M5 | 6.5 | 10 | 680 | 600 | 250 | 20 | 20 |
| CH.LCN43 | - | 35.6 | 11 | 9.35 | 14.85 | 3.75 | 18.3 | M8 | 14.85 | 13 | 5800 | 2500 | 625 | 25 | 50 |
| CH.LEN43 | 0.8 | 35.6 | 11 | 9.35 | 14.85 | 3.75 | 18.3 | M8 | 14.85 | 13 | 5800 | 2500 | 625 | 25 | 50 |
| CH.LCV28 | - | 23.25 | 7 | 5.9 | 9.4 | 2.4 | 12 | M5 | 6.5 | 10 | 2400 | 1000 | 250 | 5 | 20 |
| CH.LEV28 | 0.6 | 23.25 | 7 | 5.9 | 9.4 | 2.4 | 12 | M5 | 6.5 | 10 | 2400 | 1000 | 250 | 5 | 20 |
| CH.LCV43 | - | 35.7 | 11 | 9.4 | 14.85 | 3.85 | 18.3 | M8 | 14.85 | 13 | 5800 | 2500 | 625 | 7 | 50 |
| CH.LEV43 | 0.8 | 35.7 | 11 | 9.4 | 14.85 | 3.85 | 18.3 | M8 | 14.85 | 13 | 5800 | 2500 | 625 | 7 | 50 |

Ball Bearing Track rollers For Compact Rail

For MR, FXR rails



| Part Number | e | D | C | M | B1 | d1 | g | lg | F | L | H | B2 | d2 | S | B3 | N | LF | Cr | Co _{rad} | Co _{ax} | Mass | |
|-------------|-----|-------|----|-----|-----|------|----|------|-------|-----|------|-----|----|----|-----|---|----------------|-----|-------------------|------------------|------|--|
| | mm | | | | | | | | | | | | h7 | | | | | KN | | | g | |
| CH.RGNV28R | - | 20.75 | 9 | 6.1 | 1.6 | 10.8 | M5 | 8 | - | - | - | 1.5 | 8 | 10 | 0 | 4 | - | 3 | 1.6 | 0.46 | 20 | |
| CH.RGAV28R | 0.6 | 20.75 | 9 | 6.1 | 1.6 | 10.8 | M5 | 8 | - | - | - | 1.5 | 8 | 10 | 0 | 4 | - | 3 | 1.6 | 0.46 | 20 | |
| CH.RGNP28R | - | 20.75 | 9 | 6.1 | 1.6 | 10.8 | M5 | 8 | 18.81 | 4 | 4.1 | 1.5 | 8 | 10 | 0 | 4 | 0.7(+/-0.35) | 3 | 1.6 | 0 | 20 | |
| CH.RGAP28R | 0.6 | 20.75 | 9 | 6.1 | 1.6 | 10.8 | M5 | 8 | 18.81 | 4 | 4.1 | 1.5 | 8 | 10 | 0 | 4 | 0.7(+/-0.35) | 3 | 1.6 | 0 | 20 | |
| CH.RGNU28R | - | 18.81 | 9 | 6.1 | 1.6 | 10.8 | M5 | 8 | 18.81 | 8 | 2.1 | 1.5 | 8 | 10 | 0 | 4 | 2.35(+2/-0.35) | 2.3 | 1.12 | 0 | 20 | |
| CH.RGAU28R | 0.6 | 18.81 | 9 | 6.1 | 1.6 | 10.8 | M5 | 8 | 18.81 | 8 | 2.1 | 1.5 | 8 | 10 | 0 | 4 | 2.35(+2/-0.35) | 2.3 | 1.12 | 0 | 20 | |
| CH.RGNVX28R | - | 20.75 | 9 | 6.1 | 1.6 | 10.8 | M5 | 8 | - | - | - | 1.5 | 8 | 10 | 0 | 4 | - | 3 | 1.6 | 0.46 | 20 | |
| CH.RGAVX28R | 0.6 | 20.75 | 9 | 6.1 | 1.6 | 10.8 | M5 | 8 | - | - | - | 1.5 | 8 | 10 | 0 | 4 | - | 3 | 1.6 | 0.46 | 20 | |
| CH.RGNPX28R | - | 20.75 | 9 | 6.1 | 1.6 | 10.8 | M5 | 8 | 18.81 | 4 | 4.1 | 1.5 | 8 | 10 | 0 | 4 | 0.7(+/-0.35) | 3 | 1.6 | 0 | 20 | |
| CH.RGAPX28R | 0.6 | 20.75 | 9 | 6.1 | 1.6 | 10.8 | M5 | 8 | 18.81 | 4 | 4.1 | 1.5 | 8 | 10 | 0 | 4 | 0.7(+/-0.35) | 3 | 1.6 | 0 | 20 | |
| CH.RGNUX28R | - | 18.81 | 9 | 6.1 | 1.6 | 10.8 | M5 | 8 | 18.81 | 8 | 2.1 | 1.5 | 8 | 10 | 0 | 4 | 2.35(+2/-0.35) | 2.3 | 1.12 | 0 | 20 | |
| CH.RGAUX28R | 0.6 | 18.81 | 9 | 6.1 | 1.6 | 10.8 | M5 | 8 | 18.81 | 8 | 2.1 | 1.5 | 8 | 10 | 0 | 4 | 2.35(+2/-0.35) | 2.3 | 1.12 | 0 | 20 | |
| | | | | | | | | | | | | | | | | | | | | | | |
| CH.RGNV43R | - | 31.4 | 14 | 8.8 | 1.8 | 15 | M8 | 12.5 | - | - | - | 2.5 | 11 | 14 | 0.3 | 6 | - | 7.6 | 4 | 1.19 | 50 | |
| CH.RGAV43R | 0.8 | 31.4 | 14 | 8.8 | 1.8 | 15 | M8 | 12.5 | - | - | - | 2.5 | 11 | 14 | 0.3 | 6 | - | 7.6 | 4 | 1.19 | 50 | |
| CH.RGNP43R | - | 31.2 | 14 | 8.8 | 1.8 | 15 | M8 | 12.5 | 28.59 | 5.3 | 6.15 | 2.5 | 11 | 14 | 0.3 | 6 | 1.4(+/-0.7) | 7.6 | 4 | 0 | 50 | |
| CH.RGAP43R | 0.8 | 31.2 | 14 | 8.8 | 1.8 | 15 | M8 | 12.5 | 28.59 | 5.3 | 6.15 | 2.5 | 11 | 14 | 0.3 | 6 | 1.4(+/-0.7) | 7.6 | 4 | 0 | 50 | |
| CH.RGNU43R | - | 28.59 | 14 | 8.8 | 1.8 | 15 | M8 | 12.5 | 28.59 | 13 | 2.3 | 2.5 | 11 | 14 | 0.3 | 6 | 3.2(+2.5/-0.7) | 5.7 | 2.8 | 0 | 50 | |
| CH.RGAU43R | 0.8 | 28.59 | 14 | 8.8 | 1.8 | 15 | M8 | 12.5 | 28.59 | 13 | 2.3 | 2.5 | 11 | 14 | 0.3 | 6 | 3.2(+2.5/-0.7) | 5.7 | 2.8 | 0 | 50 | |
| CH.RGNVX43R | - | 31.4 | 14 | 8.8 | 1.8 | 15 | M8 | 12.5 | - | - | - | 2.5 | 11 | 14 | 0.3 | 6 | - | 7.6 | 4 | 1.19 | 50 | |
| CH.RGAVX43R | 0.8 | 31.4 | 14 | 8.8 | 1.8 | 15 | M8 | 12.5 | - | - | - | 2.5 | 11 | 14 | 0.3 | 6 | - | 7.6 | 4 | 1.19 | 50 | |
| CH.RGNPX43R | - | 31.2 | 14 | 8.8 | 1.8 | 15 | M8 | 12.5 | 28.59 | 5.3 | 6.15 | 2.5 | 11 | 14 | 0.3 | 6 | 1.4(+/-0.7) | 7.6 | 4 | 0 | 50 | |
| CH.RGAPX43R | 0.8 | 31.2 | 14 | 8.8 | 1.8 | 15 | M8 | 12.5 | 28.59 | 5.3 | 6.15 | 2.5 | 11 | 14 | 0.3 | 6 | 1.4(+/-0.7) | 7.6 | 4 | 0 | 50 | |
| CH.RGNUX43R | - | 28.59 | 14 | 8.8 | 1.8 | 15 | M8 | 12.5 | 28.59 | 13 | 2.3 | 2.5 | 11 | 14 | 0.3 | 6 | 3.2(+2.5/-0.7) | 5.7 | 2.8 | 0 | 50 | |
| CH.RGAUX43R | 0.8 | 28.59 | 14 | 8.8 | 1.8 | 15 | M8 | 12.5 | 28.59 | 13 | 2.3 | 2.5 | 11 | 14 | 0.3 | 6 | 3.2(+2.5/-0.7) | 5.7 | 2.8 | 0 | 50 | |

Ring and Ball Material: SKF3 grade 100Cr6 (52100)

Cage: Nylon (PA66)

Grease: Kyodo Yushi SRL or SINOPEC 7014

Dimensional Tolerance: P6

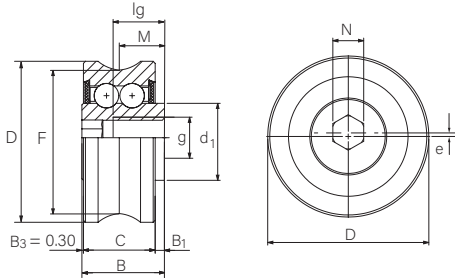
Run Out Accuracy: P5

Temperature range: -20 °C to +120 °C

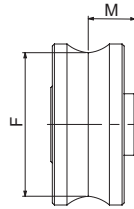
440C Stainless steel: suffix "X"

Ball Bearing Track rollers For Compact Rail

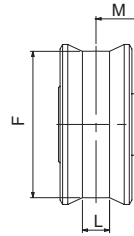
For MR, FXR rails



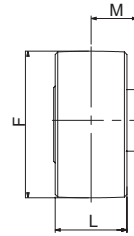
Version V
Guiding rollers



Version P
Floating rollers



Version U
Extra-floating rollers



| Part Number | e | D | C | M | B1 | d1 | g | lg | F | L | H | B2 | d2 | S | B3 | N | LF | Cr | Co _{rad} | Co _{ax} | Mass | |
|-------------|-----|------|----|------|------|------|----|------|------|----|------|----|----|---|-----|---|----------------|-----|-------------------|------------------|------|--|
| | mm | | | | | | | | | | | | h7 | | | | | KN | | | g | |
| CH.RCV28 | - | 20 | 9 | 6.25 | 1.75 | 10.8 | M5 | 7 | - | - | - | - | - | - | 0 | 4 | - | 3 | 1.6 | 0.46 | 20 | |
| CH.REV28 | 0.6 | 20 | 9 | 6.25 | 1.75 | 10.8 | M5 | 7 | - | - | - | - | - | - | 0 | 4 | - | 3 | 1.6 | 0.46 | 20 | |
| CH.RCP28 | - | 20 | 9 | 6.25 | 1.75 | 10.8 | M5 | 7 | 17.9 | 3 | 4.75 | - | - | - | 0 | 4 | 0.7(+/-0.35) | 3 | 1.6 | 0 | 20 | |
| CH.REP28 | 0.6 | 20 | 9 | 6.25 | 1.75 | 10.8 | M5 | 7 | 17.9 | 3 | 4.75 | - | - | - | 0 | 4 | 0.7(+/-0.35) | 3 | 1.6 | 0 | 20 | |
| CH.RCU28 | - | 17.8 | 9 | 6.25 | 1.75 | 9.7 | M5 | 7 | 17.8 | 9 | 1.75 | - | - | - | 0 | 4 | 2.35(+2/-0.35) | 2.3 | 1.12 | 0 | 20 | |
| CH.REU28 | 0.6 | 17.8 | 9 | 6.25 | 1.75 | 9.7 | M5 | 7 | 17.8 | 9 | 1.75 | - | - | - | 0 | 4 | 2.35(+2/-0.35) | 2.3 | 1.12 | 0 | 20 | |
| CH.RCV28X | - | 20 | 9 | 6.25 | 1.75 | 10.8 | M5 | 7 | - | - | - | - | - | - | 0 | 4 | - | 3 | 1.6 | 0.46 | 20 | |
| CH.REV28X | 0.6 | 20 | 9 | 6.25 | 1.75 | 10.8 | M5 | 7 | - | - | - | - | - | - | 0 | 4 | - | 3 | 1.6 | 0.46 | 20 | |
| CH.RCP28X | - | 20 | 9 | 6.25 | 1.75 | 10.8 | M5 | 7 | 17.9 | 3 | 4.75 | - | - | - | 0 | 4 | 0.7(+/-0.35) | 3 | 1.6 | 0 | 20 | |
| CH.REP28X | 0.6 | 20 | 9 | 6.25 | 1.75 | 10.8 | M5 | 7 | 17.9 | 3 | 4.75 | - | - | - | 0 | 4 | 0.7(+/-0.35) | 3 | 1.6 | 0 | 20 | |
| CH.RCU28X | - | 17.8 | 9 | 6.25 | 1.75 | 9.7 | M5 | 7 | 17.8 | 9 | 1.75 | - | - | - | 0 | 4 | 2.35(+2/-0.35) | 2.3 | 1.12 | 0 | 20 | |
| CH.REU28X | 0.6 | 17.8 | 9 | 6.25 | 1.75 | 9.7 | M5 | 7 | 17.8 | 9 | 1.75 | - | - | - | 0 | 4 | 2.35(+2/-0.35) | 2.3 | 1.12 | 0 | 20 | |
| | | | | | | | | | | | | | | | | | | | | | | |
| CH.RCV43 | - | 30.4 | 14 | 9 | 2 | 15 | M8 | 10.5 | - | - | - | - | - | - | 0.3 | 6 | - | 7.1 | 3.6 | 1.07 | 50 | |
| CH.REV43 | 0.8 | 30.4 | 14 | 9 | 2 | 15 | M8 | 10.5 | - | - | - | - | - | - | 0.3 | 6 | - | 7.1 | 3.6 | 1.07 | 50 | |
| CH.RCP43 | - | 30.4 | 14 | 9 | 2 | 15 | M8 | 10.5 | 27.2 | 4 | 7 | - | - | - | 0.3 | 6 | 1.4(+/-0.7) | 7.1 | 3.6 | 0 | 50 | |
| CH.REP43 | 0.8 | 30.4 | 14 | 9 | 2 | 15 | M8 | 10.5 | 27.2 | 4 | 7 | - | - | - | 0.3 | 6 | 1.4(+/-0.7) | 7.1 | 3.6 | 0 | 50 | |
| CH.RCU43 | - | 27.2 | 14 | 9 | 2 | 15 | M8 | 10.5 | 27.2 | 14 | 2 | - | - | - | 0.3 | 6 | 3.2(+2.5/-0.7) | 5.7 | 2.8 | 0 | 50 | |
| CH.REU43 | 0.8 | 27.2 | 14 | 9 | 2 | 15 | M8 | 10.5 | 27.2 | 14 | 2 | - | - | - | 0.3 | 6 | 3.2(+2.5/-0.7) | 5.7 | 2.8 | 0 | 50 | |
| CH.RCV43X | - | 30.4 | 14 | 9 | 2 | 15 | M8 | 10.5 | - | - | - | - | - | - | 0.3 | 6 | - | 7.1 | 3.6 | 1.07 | 50 | |
| CH.REV43X | 0.8 | 30.4 | 14 | 9 | 2 | 15 | M8 | 10.5 | - | - | - | - | - | - | 0.3 | 6 | - | 7.1 | 3.6 | 1.07 | 50 | |
| CH.RCP43X | - | 30.4 | 14 | 9 | 2 | 15 | M8 | 10.5 | 27.2 | 4 | 7 | - | - | - | 0.3 | 6 | 1.4(+/-0.7) | 7.1 | 3.6 | 0 | 50 | |
| CH.REP43X | 0.8 | 30.4 | 14 | 9 | 2 | 15 | M8 | 10.5 | 27.2 | 4 | 7 | - | - | - | 0.3 | 6 | 1.4(+/-0.7) | 7.1 | 3.6 | 0 | 50 | |
| CH.RCU43X | - | 27.2 | 14 | 9 | 2 | 15 | M8 | 10.5 | 27.2 | 14 | 2 | - | - | - | 0.3 | 6 | 3.2(+2.5/-0.7) | 5.7 | 2.8 | 0 | 50 | |
| CH.REU43X | 0.8 | 27.2 | 14 | 9 | 2 | 15 | M8 | 10.5 | 27.2 | 14 | 2 | - | - | - | 0.3 | 6 | 3.2(+2.5/-0.7) | 5.7 | 2.8 | 0 | 50 | |

Ring and Ball Material: SKF3 grade 100Cr6 (52100)

Cage: Nylon (PA66)

Grease: Kyodo Yushi SRL or SINOPEC 7014

Dimensional Tolerance: P6

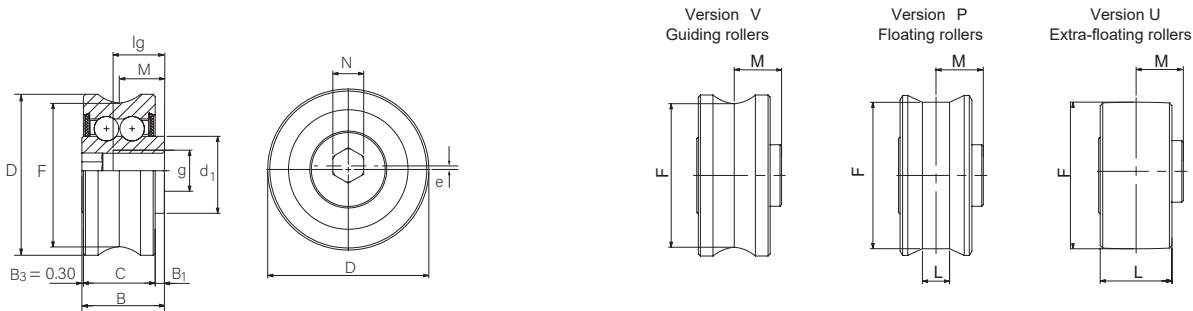
Run Out Accuracy: P5

Temperature range: -20 °C to +120 °C

440C Stainless steel: suffix "X"

Ball Bearing Track rollers For Compact Rail

For MR, FXR rails



| Part Number | e | D | C | M | B1 | d1 | g | lg | F | L | H | B2 | d2 | S | B3 | N | LF | Cr | Co _{rad} | Co _{ax} | Mass |
|-------------|-----|-------|------|-------|-----|------|-----|------|-------|-----|------|----|----|---|-----|----|-----------------|------|-------------------|------------------|------|
| | mm | | | | | | | | | | | | h7 | | | | | KN | | | g |
| CH.RCV18G | - | 13.2 | 7 | 4.6 | 1.1 | 6.8 | M4 | 5.4 | - | - | - | - | - | - | 0 | 3 | | 1.65 | 0.8 | 0.23 | 10 |
| CH.REV18G | 0.4 | 13.2 | 7 | 4.6 | 1.1 | 6.8 | M4 | 5.4 | - | - | - | - | - | - | 0 | 3 | | 1.65 | 0.8 | 0.23 | 10 |
| CH.RCP18G | - | 13.2 | 7 | 4.6 | 1.1 | 6.8 | M4 | 5.4 | 11.96 | 2.5 | 3.35 | - | - | - | 0 | 3 | 0.9 (+/-0.45) | 1.65 | 0.8 | 0 | 10 |
| CH.REP18G | 0.4 | 13.2 | 7 | 4.6 | 1.1 | 6.8 | M4 | 5.4 | 11.96 | 2.5 | 3.35 | - | - | - | 0 | 3 | 0.9 (+/-0.45) | 1.65 | 0.8 | 0 | 10 |
| CH.RCU18G | - | 11.95 | 7 | 4.6 | 1.1 | 6.8 | M4 | 5.4 | 11.95 | 6 | 1.6 | - | - | - | 0 | 3 | 1.45 (+1/-0.45) | 1.65 | 0.56 | 0 | 10 |
| CH.REU18G | 0.4 | 11.95 | 7 | 4.6 | 1.1 | 6.8 | M4 | 5.4 | 11.95 | 6 | 1.6 | - | - | - | 0 | 3 | 1.45 (+1/-0.45) | 1.65 | 0.56 | 0 | 10 |
| | | | | | | | | | | | | | | | | | | 0 | 0 | 0 | 0 |
| CH.RCV43G | - | 31.4 | 14 | 9 | 2 | 15 | M8 | 10.5 | - | - | - | - | - | - | 0.3 | 6 | | 7.6 | 4 | 1.19 | 50 |
| CH.REV43G | 0.8 | 31.4 | 14 | 9 | 2 | 15 | M8 | 10.5 | - | - | - | - | - | - | 0.3 | 6 | | 7.6 | 4 | 1.19 | 50 |
| CH.RCP43G | - | 31.5 | 14 | 9 | 2 | 15 | M8 | 10.5 | 28.59 | 6 | 6 | - | - | - | 0.3 | 6 | 2.2(+/-1.1) | 7.6 | 4 | 0 | 50 |
| CH.REP43G | 0.8 | 31.5 | 14 | 9 | 2 | 15 | M8 | 10.5 | 28.59 | 6 | 6 | - | - | - | 0.3 | 6 | 2.2(+/-1.1) | 7.6 | 4 | 0 | 50 |
| CH.RCU43G | - | 28.59 | 14 | 9 | 2 | 15 | M8 | 10.5 | 28.59 | 14 | 2 | - | - | - | 0.3 | 6 | 3.6(+2.5/-1.1) | 7.6 | 4 | 0 | 50 |
| CH.REU43G | 0.8 | 28.59 | 14 | 9 | 2 | 15 | M8 | 10.5 | 28.59 | 14 | 2 | - | - | - | 0.3 | 6 | 3.6(+2.5/-1.1) | 7.6 | 4 | 0 | 50 |
| | | | | | | | | | | | | | | | | | | 0 | 0 | 0 | 0 |
| CH.RCF43 | - | 30.4 | 14 | 9 | 2 | 15 | M8 | 10.5 | 27.2 | 9 | 7 | - | - | - | 0.3 | 6 | 4(+3/-1) | 7.1 | 3.6 | 0 | 50 |
| CH.REF43 | 0.8 | 30.4 | 14 | 9 | 2 | 15 | M8 | 10.5 | 27.2 | 9 | 7 | - | - | - | 0.3 | 6 | 4(+3/-1) | 7.1 | 3.6 | 0 | 50 |
| CH.RCF43X | - | 30.4 | 14 | 9 | 2 | 15 | M8 | 10.5 | 27.2 | 9 | 7 | - | - | - | 0.3 | 6 | 4(+3/-1) | 7.1 | 3.6 | 0 | 50 |
| CH.REF43X | 0.8 | 30.4 | 14 | 9 | 2 | 15 | M8 | 10.5 | 27.2 | 9 | 7 | - | - | - | 0.3 | 6 | 4(+3/-1) | 7.1 | 3.6 | 0 | 50 |
| CH.RCV63 | - | 42.4 | 15.7 | 10.95 | 3.1 | 22.1 | M10 | 18.8 | 38.4 | - | - | - | - | - | 0 | 17 | | 11.2 | 6.4 | 2 | 80 |
| CH.REV63 | 1.2 | 42.4 | 15.7 | 10.95 | 3.1 | 22.1 | M10 | 18.8 | 38.4 | - | - | - | - | - | 0 | 17 | | 11.2 | 6.4 | 2 | 80 |

Ring and Ball Material: SKF3 grade 100Cr6 (52100)

Cage: Nylon (PA66)

Grease: Kyodo Yushi SRL or SINOPEC 7014

Dimensional Tolerance: P6

Run Out Accuracy: P5

Temperature range: -20 °C to +120 °C

440C Stainless steel: suffix "X"