

Overall

▼ Features

The function of series SG rollers are same as the series LFR rollers. But they are mainly used in the flat track and in the condition required compact structure. After rollers are installed to the slider, the shaft will be not or seldom over the roller's side planes.

▼ Advantage of guide system that SG track roller applied

High allowance speed, low resistance and long life

For series LFR rollers, the surface profile of the outer ring is designed as the GOTHIC ARCH. When rollers run, there are two contact points with an angle 60 degrees between the roller and track. So the friction resistance is low and the load is in equality thus avoiding the stresses centralization and edge effect caused by the error from installation and manufacturing, making the track system has the characteristics of highspeed, low energy consumption, long service life and minimum noise level.

Easy installation

As rollers assembled the concentric or eccentric pivot, installation can be made conveniently. To adjust the eccentric one's eccentricity, these rollers can get the fitting preload.

Smooth running, minimum error and lower noise level

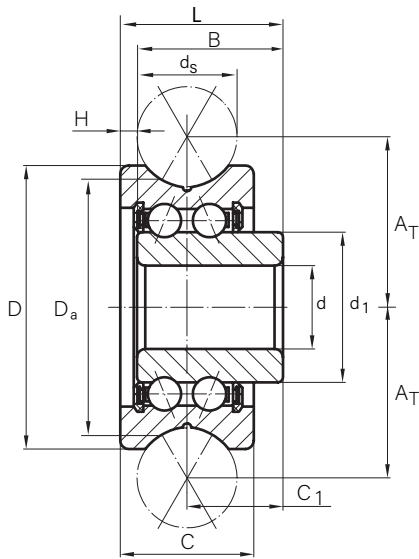
The high precision machinery and complete inspection facilities make accuracy in the profile of roller. Mature manufacturing techniques and critical inspection procedure make all rollers good in the Kea (radial runout) of outer ring and roundness of working surface, so the guide system in motion is smooth running, minimum error and lower running noise level.

▼ Application

- 1, Industrial machinery: printing machinery, paper machinery, automation machinery, textile machinery, vending machines, woodworking machinery, packaging machinery,
- 2, Electronic equipment: mechanical arm, measuring equipment, X-X platform, medical equipment, factory automation equipment;
- 3, Rotation machinery: metal heat treatment designed nuclear reactor, brakes, etc;
- 4, Aerospace industries: aircraft flaps brakes, seat brakes, missiles, airport apparatus and other equipment
- 5, Other: radio antenna brakes, door and window control, medical bed control, parking facilities, machine tool doors, laboratory automation, etc.

▼ Premium quality assurance

C&H Track Rollers are made from ultra clean steel. The dimensional tolerance is P6 class (ISO492). The run-out is P5 class (ISO492).



Series	Outer Ring	Inner Ring	Balls	Cage	Seal	Grease	Temp.Range
SG..-2RS		100Cr6 52100		Nylon	NBR	Shell Alvania EP2	-30°C to +120°C -22°F to +250°F
SSG..-2RS		1.4125 440C					

Part Number	Dimensions (mm)											Load ratings (N)					Wgt (g)
	Shaft dia.	Bore dia.	Outer dia.	Inner ring width	Outer ring width	Width mounting surface to groove centre	Shoulder diameter inner ring	shaft center to bore center	ref.	Width total	Rad.	Effective dynamic load rating as track roller (radial)	Effective static load rating as track roller (radial)	Fatigue load limit	Maximum dynamic load rating as track roller (radial)	Maximum static load rating as track roller (radial)	
	ds	d	D	B	C	C ₁	d ₁	A _T	H	L	r _{min}	C _{rw}	C _{0rw}	C _{ur}	F _{r per}	F _{0r per}	
SG15-2RS	6	5	17	8.75	8	5.75	8.6	10.23	1	9.75	0.5	1630	900	44.5	2230	1800	8
SG15-10-2RS	10	5	17	8.75	8	5.75	8.6	12.75	1	9.75	0.5	1630	900	44.5	2230	1800	9
SG15N-2RS	6	5	17	9.25	8	5.75	8.6	10.23	0.5	9.75	0.5	1630	900	44.5	2230	1800	8
SG20-2RS	8	6	24	11.55	11	7.25	11.1	14.31	1.2	12.75	0.5	4120	2300	115	2550	4600	25
SG20N-2RS	8	6	24	12.05	11	7.25	11.1	14.31	0.7	12.75	0.5	4120	2300	115	2550	4600	25
SG25-2RS	10	8	30	14	14	8.5	13	17.885	1.5	15.5	0.5	5090	2600	150	3050	3900	49
SG25N-2RS	10	8	30	14.5	14	8.5	13	17.885	1	15.5	0.5	5090	2600	150	3050	3900	49
SG35-2RS	12	12	42	20.5	19	12.5	18	24.465	1.5	22	0.5	13200	7700	370	6120	11600	136
SG35N-2RS	12	12	42	21	19	12.5	18	24.465	1	22	0.5	13200	7700	370	6120	11600	136
LFR50/5-4N-2Z	4	5	16	8.5	7	5	6.9	9	0	8.5	0.5	1560	850	43	1300	1700	8
LFR50/5-5-2Z	5	5	17	8.5	7	5	6.9	10	0	8.5	0.5	1630	900	44.5	2230	1800	8
LFR50/5-6N-2Z	6	5	17	8.5	7	5	6.9	10.5	0	8.5	0.5	1630	900	44.5	2230	1800	8
LFR50/8-6N-2Z	6	8	24	12.5	11	7	12.3	14	0	12.5	0.5	4120	2300	115	2550	4600	25
LFR50/8-8N-2Z	8	8	24	12.5	11	7	12.3	14.5	0	12.5	0.5	4120	2300	115	2550	4600	25
LFR150/8-6N-2Z	6	6.1	24	15.1	11	9.6	12.6	14	0	15.1	0.5	4120	2300	115	2550	4600	25
LFR15201-10-2Z	10	10.5	35	20.7	15.9	12.75	17.8	20.65	0	35	0.5	8300	5000	250	4500	8300	90

Shanghai chenghui (C&H) Bearing Co.,Ltd

2-1709, No 289, Zheqian Road, Pudong, Shanghai, China

Tel: +86 (0) 21 58356710 Fax: +86 (0) 21 58356720

E-mail: jason@chenghuibearing.com / chenghui-china.com